

Technical Note - TN1001w

Configuring Music Ace for a Windows XP Limited User Account in a Non-Network Environment

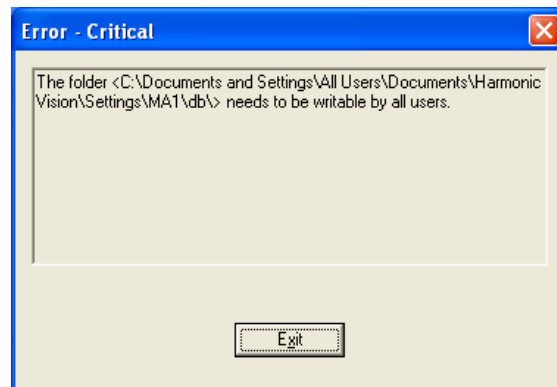
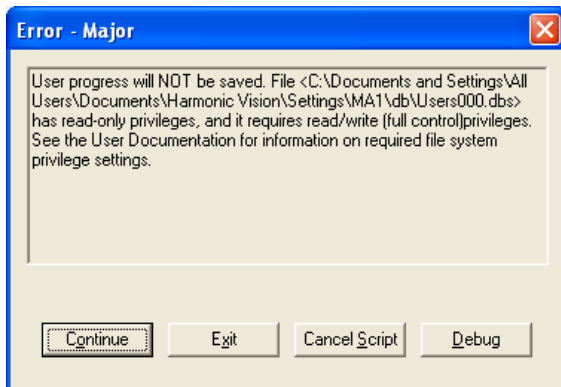
Scope

This technical note applies to all V3.0, V3.1, V3.1.3 and V4.0 Music Ace products (Music Ace, Music Ace 2, Music Ace Starter*, Music Ace Deluxe* and Music Ace Maestro) running on Windows XP in a non-networked environment. This includes consumer (retail box) versions, single-Educator versions and Lab Pack versions. For Windows XP network versions please see TN1001wn.

*** There two exceptions to this: for Music Ace Deluxe v3.1.3 please see TN1001dxw and for Music Ace Starter V3.0 please see TN1018.**

Overview

When you attempt to run a Music Ace product V3.0, V3.1, V3.1.3 or V4.0 from a limited user account on Windows XP, you may receive an error message similar to one of those shown below.



To configure Music Ace to run properly from a Windows XP limited user account, you will need to set file permissions for the configuration files and student tracking files so that they may be modified from the limited user account.

These instructions assume that you have installed your Music Ace product in the default location specified during installation. If you have installed the product in another location, you will need to make the appropriate changes to the file locations contained in these instructions.

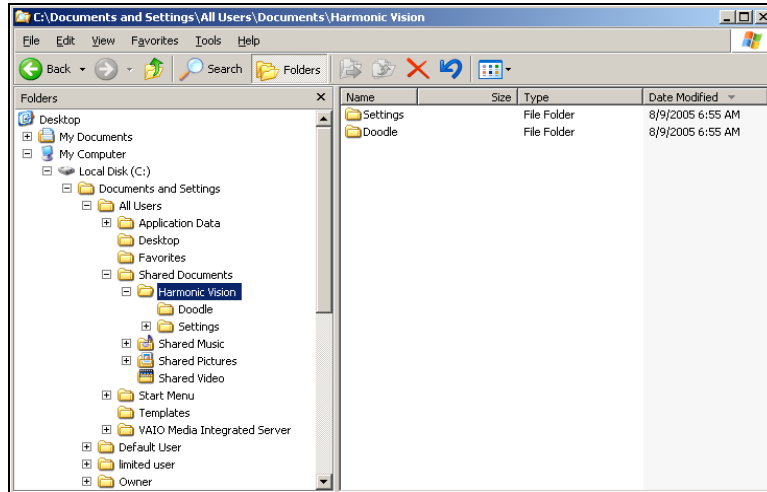
Technical Note - TN1001w

Configuring Music Ace for a Windows XP Limited User Account in a Non-Network Environment

Procedure for Windows XP Home Version

(If you are using **Windows XP Professional** version please refer to the next section of this document.)

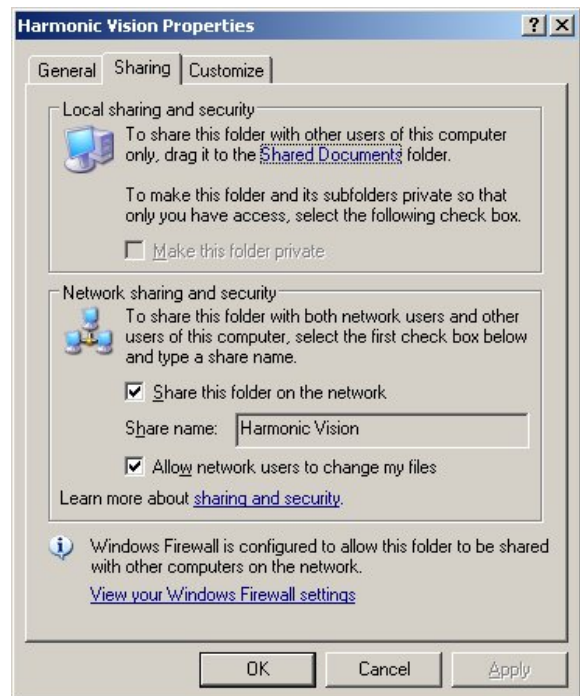
1. Using Windows Explorer, browse to
C:\Documents and Settings\All Users\Shared Documents\Harmonic Vision.



2. Right click on the **Harmonic Vision** folder and select **Properties**. On the *Harmonic Vision Properties* screen select the **Sharing** tab. You will see a screen that looks similar to the one shown here.

It is possible that you will see a screen that is different than the one shown here. In that case you will need to click on the link titled "**If you understand the security risks but want to share files without running the wizard, click here.**" This will bring up the screen shown here.

3. In the **Network sharing and security** section, click the **Share this folder on the network** check box.
4. Then click the **Allow network users to change my files** check box.
5. Click **Apply** and then **OK**.
6. You should now be able to successfully run your Music Ace from a limited user login on Windows XP Home edition.



Technical Note - TN1001w

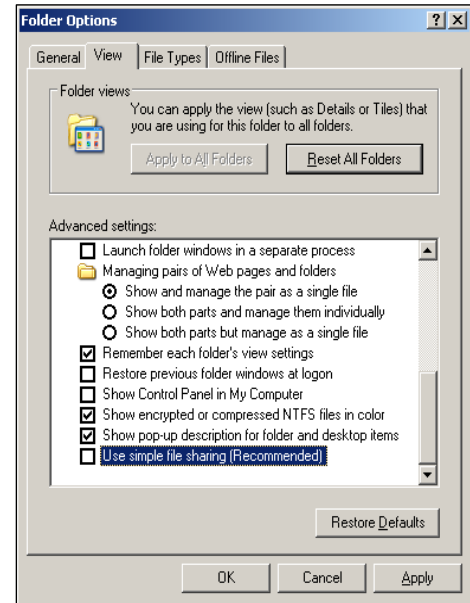
Configuring Music Ace for a Windows XP Limited User Account in a Non-Network Environment

Procedure for Windows XP Professional Version

(If you are using **Windows XP Home** version please refer to the previous section of this document.)

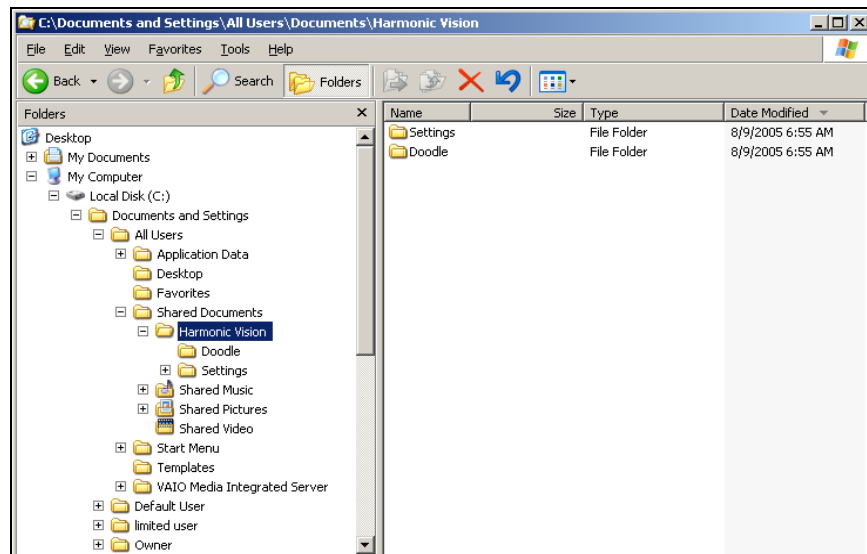
To establish the proper file permissions for selected Music Ace files, you must set the Windows file folder option to allow Security settings to be modified. From an administrative account, click on **Start – Settings – Control Panel** and select **Folder Options**. On the *Folder Options* screen select the **View** tab and scroll down to the bottom of the Advanced Settings window. The screen should look similar to the one shown here.

Ensure that the checkbox titled “Use simple file sharing” is **NOT** checked. Then click on **Apply** followed by **OK**.



Next, from an administrative account, establish the file permissions to allow Music Ace to modify configuration and student tracking files. Using Windows Explorer, browse to **C:\Documents and Settings\All Users\Documents\Harmonic Vision**.

Please note that although the folder containing the “Harmonic Vision” folder is shown as “**Shared Documents**” in the Explorer window, it must be referenced as “**Documents**” in these procedures.

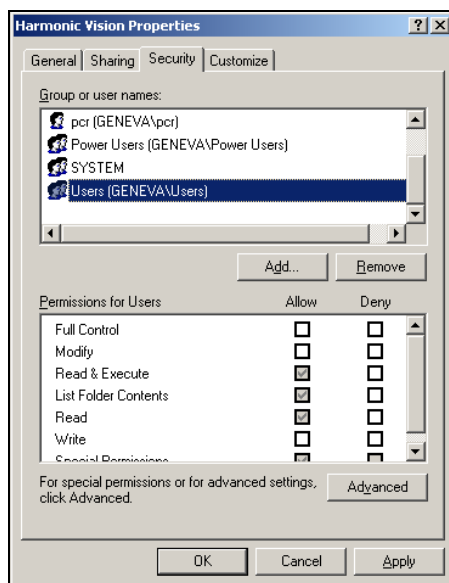


Technical Note - TN1001w

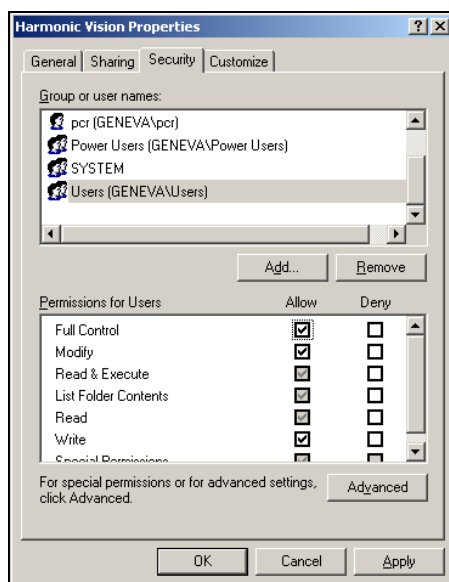
Configuring Music Ace for a Windows XP Limited User Account in a Non-Network Environment

Right click on the Harmonic Vision folder and select **Properties**. On the *Harmonic Vision Properties* screen select the **Security** tab. If the Security tab is not shown go back to the previous step and make sure you have properly set the Folder Options.

You will see a screen that looks similar to the following:



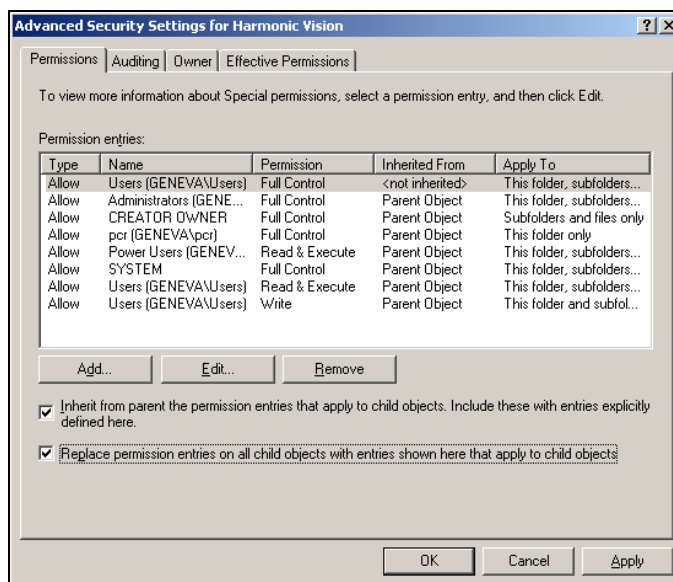
Select **Users [<computer name>\Users]** in the *Group or user Names* window at the top of the screen. Then, in the *Permissions for Users* window at the bottom, under the **ALLOW** column, click on the **Full Control** check box. This will create check marks in the **ALLOW** column as shown below.



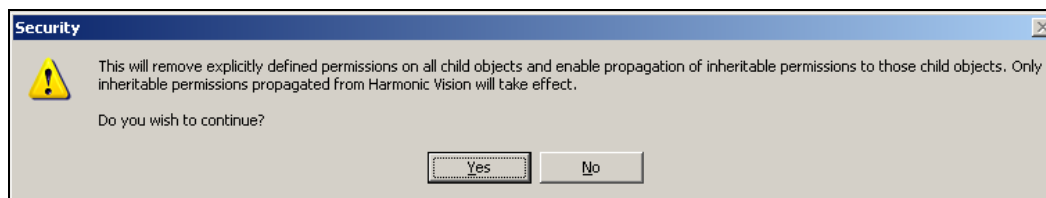
Technical Note - TN1001w

Configuring Music Ace for a Windows XP Limited User Account in a Non-Network Environment

Now click the **Advanced** button. You will see a screen that looks similar to:



Make sure that both checkboxes at the bottom of the screen are checked, and then click **Apply**. You will then see the following:



Click **Yes** and then click **OK**. You will return to the *Harmonic Vision Properties* screen.

To finish setting file permissions, click **Apply** and then **OK**.

You should now be able to run your Music Ace product from Windows XP limited user logins, as well as save compositions created in the Music Doodle Pad.